

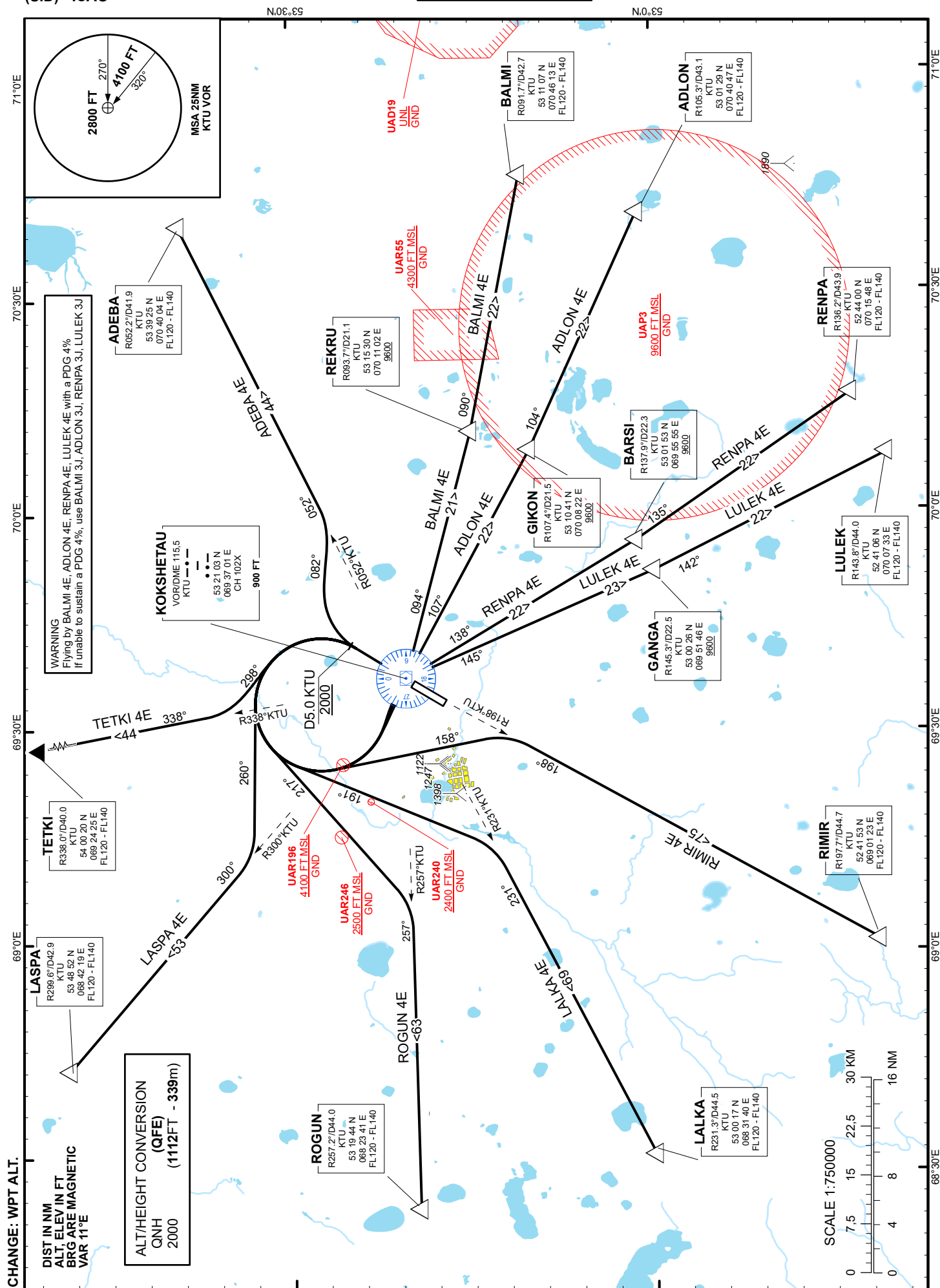
STANDARD DEPARTURE
CHART - INSTRUMENT
(SID) - ICAO

TRANSITION ALTITUDE
10000 FT

KOKSHETAU TOWER 127.9
KOKSHETAU ATIS (EN) 134.9
KOKSHETAU ATIS (RU) 126.0

ADEBA 4E, ADLON 4E, BALMI 4E,
LASPA 4E, LULEK 4E, RENPA 4E,
RIMIR 4E, LALKA 4E, ROGUN 4E,
TETKI 4E.

KOKSHETAU
RWY 02



STANDARD INSTRUMENT DEPARTURE ROUTES (SID) KOKSHETAU RWY 02

ADEBA 4E

After take-off climb straight ahead to 2000 or above. At D5.0 KTU, turn RIGHT on track 082° until intercept R052° KTU, then proceed on track 052° to ADEBA (R052.2° D41.9 KTU).
Cross ADEBA at FL120-FL140.

BALMI 4E

After take-off climb straight ahead to 2000 or above. At D5.0 KTU, turn LEFT to KTU, after crossing KTU proceed on track 094° to REKRU (R093.7° D21.1 KTU). After crossing REKRU turn LEFT on track 090° to BALMI (R091.7° D42.7 KTU).
Cross REKRU at 9600FT or above.
Cross BALMI at FL120-FL140.

ADLON 4E

After take-off climb straight ahead to 2000 or above. At D5.0 KTU, turn LEFT to KTU, after crossing KTU proceed on track 107° to GIKON (R107.4° D21.5 KTU). After crossing GIKON turn LEFT on track 104° to ADLON (R105.3° D43.1 KTU).
Cross GIKON at 9600FT or above.
Cross ADLON at FL120-FL140.

RENPA 4E

After take-off climb straight ahead to 2000 or above. At D5.0 KTU, turn LEFT to KTU, after crossing KTU proceed on track 138° to BARSİ (R137.9° D22.3 KTU). After crossing BARSİ turn LEFT on track 135° to RENPA (R136.2° D43.9 KTU).
Cross BARSİ at 9600FT or above.
Cross RENPA at FL120-FL140.

LULEK 4E

After take-off climb straight ahead to 2000 or above. At D5.0 KTU, turn LEFT to KTU, after crossing KTU proceed on track 145° to GANGA (R145.3° D22.5 KTU). After crossing GANGA turn LEFT on track 142° to LULEK (R143.8° D44.0 KTU).
Cross GANGA at 9600FT or above.
Cross LULEK at FL120-FL140.

RIMIR 4E

After take-off climb straight ahead to 2000 or above. At D5.0 KTU, turn LEFT on track 158° until intercept R198° KTU, then proceed on track 198° to RIMIR (R197.7° D44.7 KTU).
Cross RIMIR at FL120-FL140.

LALKA 4E

After take-off climb straight ahead to 2000 or above. At D5.0 KTU, turn LEFT on track 191° until intercept R231° KTU, then proceed on track 231° to LALKA (R231.3° D44.5 KTU).
Cross LALKA at FL120-FL140.

ROGUN 4E

After take-off climb straight ahead to 2000 or above. At D5.0 KTU, turn LEFT on track 217° until intercept R257° KTU, then proceed on track 257° to ROGUN (R257.2° D44.0 KTU).
Cross ROGUN at FL120-FL140.

LASPA 4E

After take-off climb straight ahead to 2000 or above. At D5.0 KTU, turn LEFT on track 260° until intercept R300° KTU, then proceed on track 300° to LASPA (R299.6° D42.9 KTU).
Cross LASPA at FL120-FL140.

TETKI 4E

After take-off climb straight ahead to 2000 or above. At D5.0 KTU, turn LEFT on track 298° until intercept R338° KTU, then proceed on track 338° to TETKI (R338.0° D40.0 KTU).
Cross TETKI at FL120-FL140.